

# PARTNER PoC GUIDE

## Data Quality & Data Test Automation



HIGH DATA QUALITY  
MASTERED.



# Table of Contents

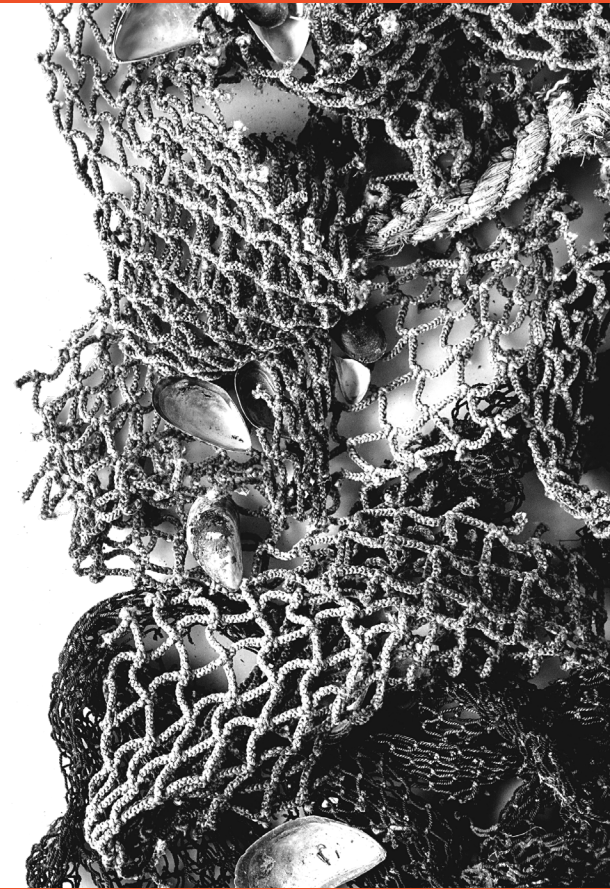
- Prospecting
  - Ideal Customer Profile
  - PoC Scenarios
  - Resources & Handouts
- PoC Details
  - PoC Process
  - PoC Possibilities
  - Who implements the PoC?
- Partner Center
  - Available resources
  - How to get access?

Whenever we reference a document within this guide, you can get that document by one of the following ways:

- **Partner Center:** You can download them from within our partner center.  
→ [How to access the partner center](#)
- **Download Link:** We provide you a download URL directly within this guide. That URL can be sent to the prospect/client.  
The download is hosted on our HubSpot CRM, but we do not track the prospects opening these documents. Therefore, we do not ask for an email-address or other registration if prospects/clients intend to download these documents.

# Prospecting

How to find a PoC prospect/customer



# Ideal Customer Profile

Industry	Size	Typical Projects	Common Technologies in use	Pain Points	Job Titles
<ul style="list-style-type: none"><li>• Finance</li><li>• Insurance</li><li>• Healthcare</li><li>• Manufacturing</li></ul>	<ul style="list-style-type: none"><li>• 250+ employees</li><li>• Mid - large</li></ul>	<ul style="list-style-type: none"><li>• Data Warehouse Modernisation</li><li>• Automation</li><li>• Data Quality</li><li>• DataOps</li></ul>	<ul style="list-style-type: none"><li>• WhereScape</li><li>• Microsoft SQL</li><li>• Microsoft Azure</li><li>• Snowflake</li><li>• Teradata</li><li>• SAP</li><li>• Google BigQuery</li></ul>	<ul style="list-style-type: none"><li>• Manual Testing</li><li>• Data Quality Issues</li><li>• Implementation Issues</li><li>• Regulatory Compliance</li><li>• No trust by end users</li></ul>	<ul style="list-style-type: none"><li>• Chief Data Officer</li><li>• Head of Data/Team Lead</li><li>• Data Engineer</li><li>• Data Architects</li><li>• Data Stewards</li><li>• Regulatory People</li></ul>

Clients usually choose between one and three usage scenarios to be evaluated during a PoC:

## Data Test Automation

- Quality assurance in data-centric projects by test automation (Regression-, Unit-, Integration-, Performance-Testing):
  - Data Warehouse with ETL/ELT processes
  - Data Lakes
  - Data Analytics
  - Reporting
  - Business Applications (ERP, CRM)
  - Data Migrations
- DevOps in data-centric projects: Automated testing within continuous integration or deployment processes (CI/CD). E.g. Azure DevOps, Jenkins or similar tools.
- Automating DataOps processes

## Data Quality Assurance

- Ongoing data validation and plausibility checking (monitoring).
- Receiving notifications if data errors are detected.
  - Notify technical staff to fix issues. Or creating service desk tickets.
  - Notify business experts (data stewards, data entry, application users)
- Preventing erroneous data from entering live systems (data integration; ETL/ELT).
- Fixing business processes that fail or are inefficient because of bad data.
- Automating manual data reconciliation or validation tasks.
- Triggering external processes to fix issues. Technical but also business processes like telling the right employee to fix a specific issue.

# Handouts and Resources for Prospects/Customers

- **Website Link**

- <https://bigeval.com>

- **Factsheets (Flyers)**

We offer two different factsheets which can be handed out depending on the scenarios that may make sense for the specific prospect.

- **BiG EVAL Data Quality Management**  
<https://hubs.ly/Q01QRqgD0>
- **BiG EVAL Data Test Automation**  
<https://hubs.ly/Q01QRqz60>

- **Introduction (Pitch Deck)**

We usually use the pitch deck to introduce our solution combined with a personal demonstration. But the pitch deck is also self explaining and can be handed out to prospects as an introduction.

- <https://hubs.ly/Q01QRqXB0>

- **Pricing**

Prices for BiG EVAL subscriptions are available online

- <https://bigeval.com/pricing>

- **Success Stories (References)**

Available within our partner center or online on:

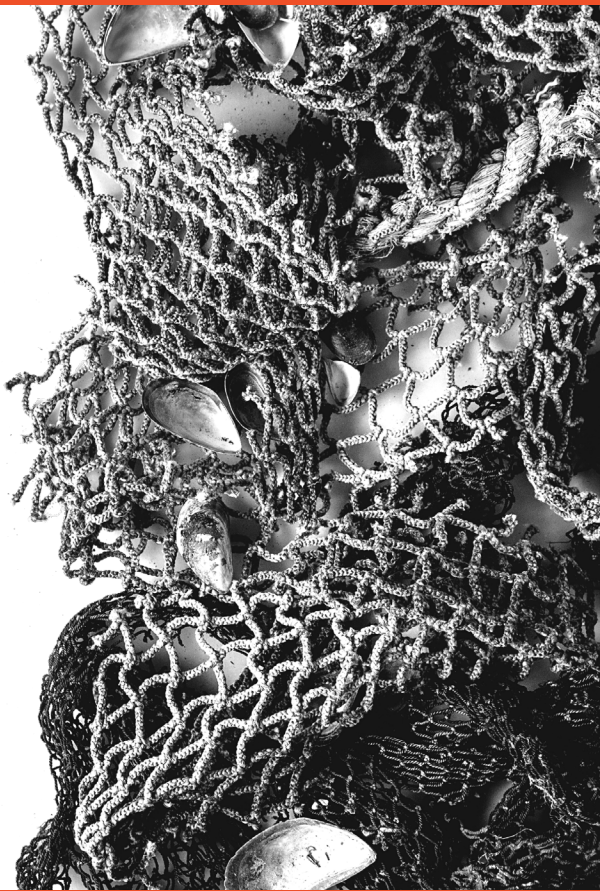
- <https://bigeval.com/customers>

- **Reviews**

Public reviews from BiG EVAL customers are available on our G2 page:

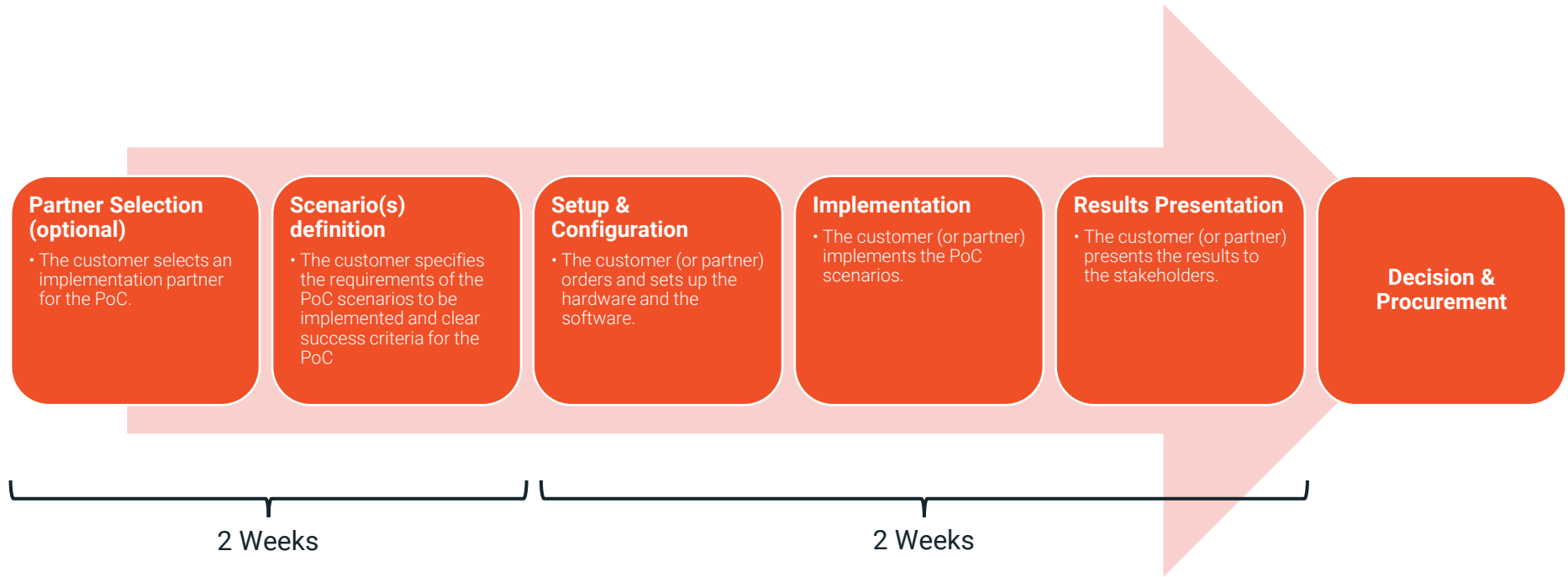
- <https://www.g2.com/products/big-eval>

# PoC Details





Most PoC projects follow the following process:



The customer can choose between two different possibilities to perform the PoC:

## Trial License

Customer installs BiG EVAL in own data center or cloud.

*Preferred if client wants to evaluate with own data.*

- 14 day trial license (full features available)
- Physically installed within customers data centre or cloud environment.
- Access to own data.
- Setup and Configuration needs to be done by customer or partner.
- No pre-configured data validation cases.

## Sandbox

Customer gets access to a preconfigured virtual machine.

*Preferred if client just wants to play around quickly with some demo data.*

- 10 day access (full features available)
- Demos for all features and usage scenarios are preconfigured.
- Physically installed within BiG EVAL's cloud environment.
- No access to customers data for evaluation.
- Set up and prepared by BiG EVAL team; available on short-term.

The PoC can be implemented by different parties:

## Customer

The customer implements the PoC by himself.

- Setup and configuration done by the customer.
- Implementation of data validation rules and test cases done by the customer.
- Full Support available

## Partner

The customer commissions a BiG EVAL partner to implement the PoC.

- Customer chooses a BiG EVAL partner.
  - See our Partner Directory <https://bigeval.com/partners/>
  - Sometimes one of the BiG EVAL partners is already a contractor of the customer.
  - Or if a contractor intends to become a BiG EVAL partner we are happy to support.
- Individual arrangement with the BiG EVAL partner.

## BiG EVAL

The customer commissions BiG EVAL to implement the PoC

- Ask for a quote

Support by BiG EVAL

# Partner Center

Accessing resources and information



# What can be found in the Partner Center?



## Downloads

- > Factsheets
- > Success Stories
- > Pitchdecks
- > Pricelists
- > Tools
- > eBooks
- > Media
- > Recordings

# Getting Access to the Partner Center (and the Academy)



- Goto <https://bigeval.com>
- Click Sign In
- Click Register

- Send an email with your username to [support@bigeval.com](mailto:support@bigeval.com) and request Access to the Partner Center

- Goto <https://bigeval.com>
- Sign out and Re-Sign-in
- Open Partner Center Resources -> Partner Center or Resources -> Academy

# LET'S GO FISHING!

BiG EVAL - Bolt Technology Consulting GmbH  
Oberfeldstrasse 12a  
8302 Kloten  
Schweiz

Email: [info@bigeval.com](mailto:info@bigeval.com)  
Phone: +41 (44) 55 222 66  
Web: [www.bigeval.com](http://www.bigeval.com)



**HIGH DATA QUALITY  
MASTERED.**